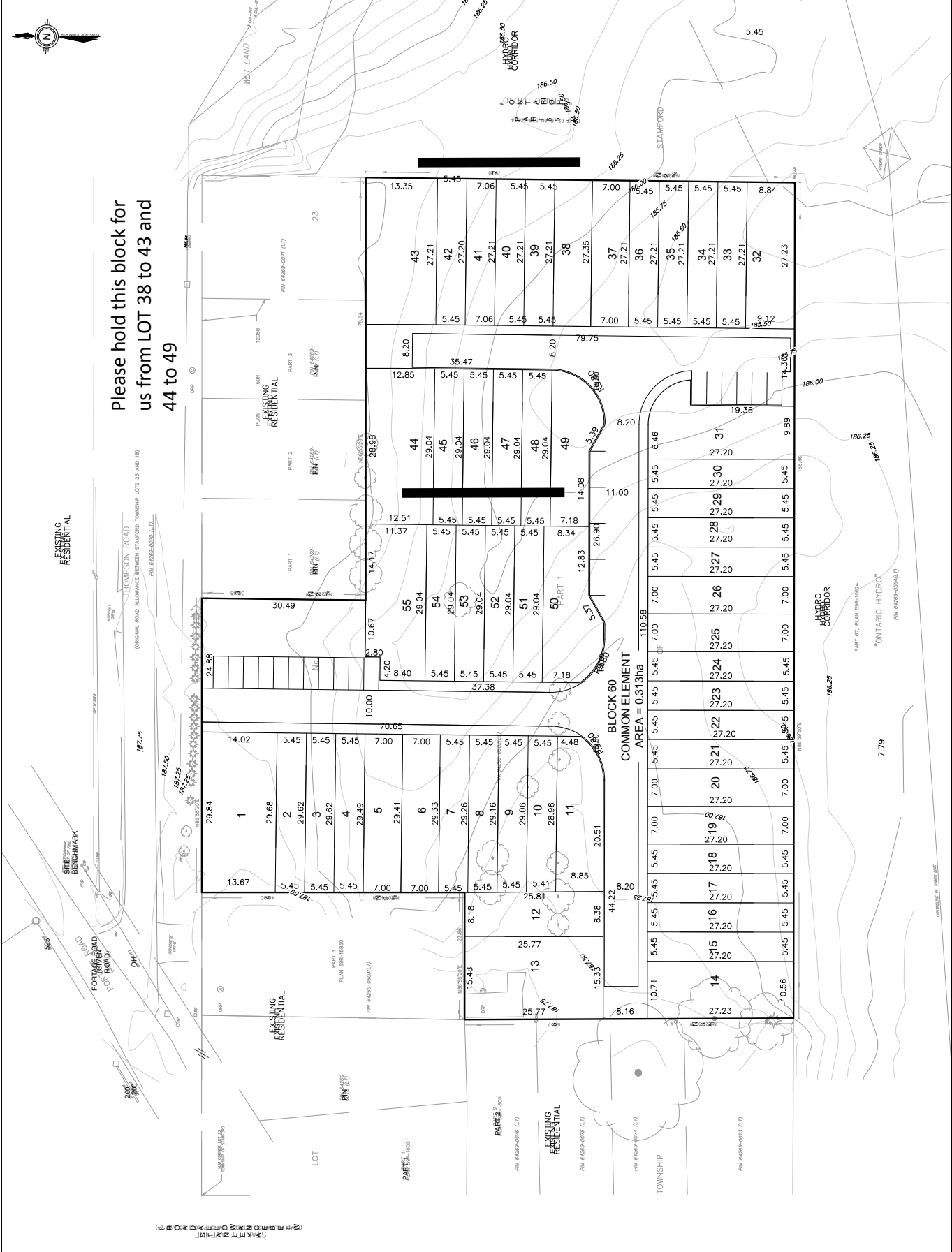


DRAFT PLAN
OF VACANT LAND
CONDOMINIUM

PART OF LOT 23
GEOGRAPHIC TOWNSHIP OF
STAMFORD
NOW IN THE CITY OF
NIAGARA FALLS
REGIONAL MUNICIPALITY OF
NIAGARA



Please hold this block for
us from LOT 38 to 43 and
44 to 49



SOURCE: SURVEYED BY HYDRO, PERIT 1: HOME SURVEYORS INC.

BENCHMARK: MONUMENTAL IRON ROD IN CONCRETE FOUNDATION AT THE CORNER OF THE LOTS.

INFORMATION REQUIRED:
MARKS LOCATIONS OF THE IRON RODS AS SHOWN ON THIS PLAN.

DATE: 17.12.2019

OWNERS CERTIFICATE: THE SIGNATURE OF THE LANDS TO BE SUBDIVIDED ON THIS PLAN AND THE AUTHORITY TO BE EXERCISED HEREON IS THE PROPERTY OF THE LANDS TO BE SUBDIVIDED.

LAND USE SCHEDULE

CLASSIFICATION	DESCRIPTION	AREA
RES-1	RESIDENTIAL SINGLE DETACHED	98.60
RES-2	RESIDENTIAL TWO UNIT	98.60
RES-3	RESIDENTIAL THREE UNIT	98.60
RES-4	RESIDENTIAL FOUR UNIT	98.60
RES-5	RESIDENTIAL FIVE UNIT	98.60
RES-6	RESIDENTIAL SIX UNIT	98.60
RES-7	RESIDENTIAL SEVEN UNIT	98.60
RES-8	RESIDENTIAL EIGHT UNIT	98.60
RES-9	RESIDENTIAL NINE UNIT	98.60
RES-10	RESIDENTIAL TEN UNIT	98.60

APPROVALS

IBI GROUP
200 James Street North
Hamilton ON L8K 1H5 Canada
416-949-1234 Fax 416-949-1011
ibi@ibigroup.com